

SHAEC25022613806

2025 09 04

1

13

**(SVHC)**

1.

<http://echa.europa.eu/web/guest/candidate-list-table>

2. REACH

2.1

1907/2006 EC	33	57	59
0.1%			

59	1907/2006 EC		7	4	57
(a)		0.1%	1 / /		(b)

2021	1	5	0.1%	w/w
SVHC			2008/98/EC	ECHA
SCIP				

2.2

SVHC

31	1907/2006	REACH
----	-----------	-------

2.3

0.1% (w/w) /	1272/2008	CLP
1907/2006	REACH	

(SDS)

-	1272/2008	CLP
-	1272/2008	CLP
1272/2008	CLP	;
-	1272/2008	CLP

(a) 0.2 1 (w/w)

(b) PBT vPvB 0.1 (w/w)

(c) (w/w) 0.1

(d)

3.

SVHC

SVHC

SVHC

(SVHC)

SHAEC25022613806

2025 09 04

3

13



(SVHC)

d e f g @ h SVHC " •

		CAS No.	001 (%)	RL (%)
-	SVHC	-	ND	-

...† h SVHC " •

		CAS No.	001 (%)	RL (%)
/	SVHC	-	ND	-

Â x /

(1) SVHC RL SVHC SVHC

(2) RL = ( RL RL )

ND = ( RL) ND SVHC

(3) \*

\*\*

ICP-OES

ICP-OES

RL = 0.01% ( (VI) )

RL= 0.001% ) RL=0.005%( ) (VI) RL= 0.005%(

RL=0.060%

(4) § (CAS No.: 90-94-8) (CAS No.: 101-61-1) 0.1%(w / w)

SVHC

(5)

(6)

(7) / = SVHC

/

ILAC-G8:09/2019

w=0



(SVHC)

## SVHC:

			CAS No.	RL (%)
I	1	4,4'- (MDA)	101-77-9	0.100
I	2	2,4,6- -5- ( )	81-15-2	0.100
I	3	C10-13 ( )	85535-84-8	0.100
I	4		120-12-7	0.100
I	5	(BBP)	85-68-7	0.100
I	6	(2- ) (DEHP)	117-81-7	0.100
I	7	(TBTO)	56-35-9	0.100
I	8	*	7646-79-9	0.010
I	9	*	1303-28-2	0.010
I	10	*	1327-53-3	0.010
I	11	(DBP)	84-74-2	0.100
I	12	(HBCDD) HBCDD, -HBCDD, -HBCDD) ( -	-	0.100
I	13	*	7784-40-9	0.010
I	14	*	10588-01-9 /7789-12-0	0.010
I	15	*	15606-95-8	0.010
II	16	2,4-	121-14-2	0.100
II	17	**	90640-80-5	0.100
II	18	**	90640-81-6	0.100
II	19	**	91995-15-2	0.100
II	20	**	91995-17-4	0.100
II	21	**	90640-82-7	0.100
II	22		84-69-5	0.100
II	23	*	7758-97-6	0.010
II	24	(C.I. 104)*	12656-85-8	0.010
II	25	(C.I. 34)*	1344-37-2	0.010
II	26	**	65996-93-2	0.100
II	27	(2- )	115-96-8	0.100
II	28		79-06-1	0.100
III	29	*	7789-09-5	0.010
III	30	*	-	0.010
III	31	*	12179-04-3 /1303-96-4 /1330-43-4	0.010
III	32	*	7789-00-6	0.010
III	33	*	7778-50-9	0.010
III	34	*	7775-11-3	0.010
III	35	*	12267-73-1	0.010
III	36		79-01-6	0.100
IV	37		110-80-5	0.100

(SVHC)

				CAS No.	RL (%)
IV	38			109-86-4	0.100
IV	39			-	0.010
IV	40		*	1333-82-0	0.010
IV	41		*	513-79-1	0.010
IV	42		*	71-48-7	0.010
IV	43		*	10141-05-6	0.010
IV	44		*	10124-43-3	0.010
V	45		1,2,3-	96-18-4	0.100
V	46	1,2-	- (C6-8 ) ( C7)	71888-89-6	0.100
V	47	1,2-	- (C7-11 ) ( )	68515-42-4	0.100
V	48		1- -2-	872-50-4	0.100
V	49			111-15-9	0.100
V	50			302-01-2	0.100
V	51			/7803-57-8	0.100
V	51		*	7789-06-2	0.010
VI	52		1,2-	107-06-2	0.100
VI	53	4,4'-	-3,3'-	101-14-4	0.100
VI	54		2-	90-04-0	0.100
VI	55			140-66-9	0.100
VI	56			-	0.010
VI	57		*	7778-39-4	0.010
VI	58			111-96-6	0.100
VI	59			117-82-8	0.100
VI	60		*	7778-44-1	0.010
VI	61		*	24613-89-6	0.010
VI	62			25214-70-4	0.100
VI	63		*	13424-46-9	0.010
VI	64		*	6477-64-1	0.010
VI	65		*	15245-44-0	0.010
VI	66		N,N-	127-19-5	0.100
VI	67		*	49663-84-5	0.010
VI	68			77-09-8	0.100
VI	69		*	11103-86-9	0.010
VI	70		*	3687-31-8	0.010
VI	71			-	0.010
VII	72		C.I. 26§	2580-56-5	0.100
VII	73		C.I. 3§	548-62-9	0.100
VII	74		(TEGDME)	112-49-2	0.100
VII	75		(EGDME)	110-71-4	0.100
VII	76	4,4'- ( )	( )	90-94-8	0.100
VII	77	4,4'- ( )-4''-	§	561-41-1	0.100
VII	78		*	1303-86-2	0.010

(SVHC)

				CAS No.	RL (%)		
VII	79			75-12-7	0.100		
VII	80		*	17570-76-2	0.010		
VII	81	N,N,N',N'-	-4,4'-	( )	101-61-1	0.100	
VII	82	1,3,5- (	)-1,3,5-	-2,4,6-(1H,	2451-62-9	0.100	
		3H,5H)-	(TGIC)				
VII	83		C.I. 4§	6786-83-0	0.100		
VII	84	1,3,5- -[(2S	2R)-2,3-	]1,3,5-	-	59653-74-6	0.100
		2,4,6-(1H, 3H, 5H)-	( -TGIC)				
VIII	85		*	69011-06-9	0.010		
VIII	86	1,2-	- ( )	84777-06-0	0.100		
VIII	87			629-14-1	0.100		
VIII	88		1-	106-94-5	0.100		
VIII	89	3-	-2-	-2-(3-	)1,3-	143860-04-2	0.100
VIII	90						

**(SVHC)**

SHAEC25022613806

2025 09 04

8

13



(SVHC)

SHAEC25022613806

2025 09 04

10

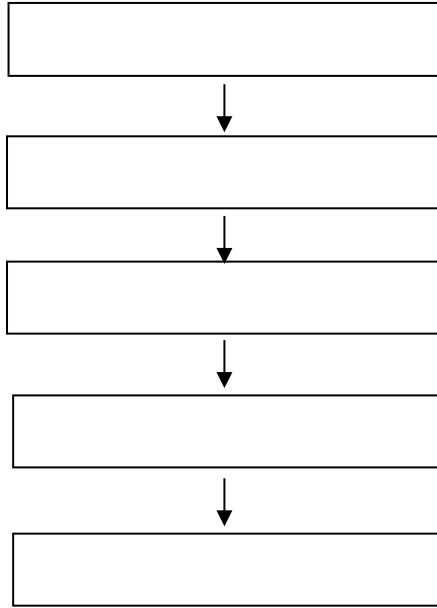
13

(SV

(SVHC)

			CAS No.	RL (%)
XXVI	222	S-( [5.2.1.0'2,6] -3- -8( 9)- ) O-( 2- ) O-( 2- )	255881-94-8	0.100
XXVI	223	- (2- )	1067-53-4	0.100
XXVII	224	N-	924-42-5	0.100
XXVIII	225	1,2- (2,4,6- )	37853-59-1	0.100
XXVIII	226	A	79-94-7	0.100
XXVIII	227	S	80-09-1	0.100
XXVIII	228	*	13701-59-2	0.005
XXVIII	229	(2- )	-	0.100
XXVIII	230		4247-02-3	0.100
XXVIII	231		108-78-1	0.100
XXVIII	232		-	0.100
XXVIII	233	*	-	0.060
XXIX	234	(4- )	80-07-9	0.100
XXIX	235	(2,4,6- )	75980-60-8	0.100
XXX	236	2,4,6-	732-26-3	0.100
XXX	237	2-(2'- 5'- ) (UV-329)	3147-75-9	0.100
XXX	238	2-(4- )-2-( )-1-(4- )- 1- (PI-379)	119344-86-4	0.100
XXX	239	(UV-326)	3896-11-5	0.100
XXX	240	2-	-	0.100
XXXI	241		80-43-3	0.100
XXXI	242		115-86-6	0.100
XXXII	243	6-[(C10-C13)- -( , )-2,5- -1- ]	2156592-54-8	0.100
XXXII	244	O,O,O-	597-82-0	0.100
XXXII	245		107-51-7	0.100
XXXII	246		338-83-0	0.100
XXXII	247		192268-65-8	0.100
XXXIII	248	( )	17928-28-8	0.100
XXXIII	249		141-62-8	0.100
XXXIII	250	51	-	0.100
/	251		108-46-3	0.100
/	252		141-63-9	0.100
/	253		110-54-3	0.100
/	254	4,4'- (BPF)	620-92-8	0.100
/	255	4,4'-[2,2,2'- 1-( ) ] (BPAF)	-	0.100
/	256	(DBDPE)	84852-53-9	0.100

(SVHC)



(SVHC)

C D S F /



SGS

\*\*\*

\*\*\*

