

Test Report

No.: CANEC25030712727

Date: Dec 17, 2025

Page 1 of 7

Client Name: YANGZHOU YANGJIE ELECTRONIC TECHNOLOGY CO.,LTD

Client Address: NO.6 WEST HEYE ROAD, HANJIANG DISTRICT, YANGZHOU, JIANGSU, CHINA

Sample Name: Glass Case Diode

Client Ref. Information: Glass Tube

The above sample(s) and information were provided by the client.

SGS Job No.: GZP25-034879

Reference No.: SHP25-041836

Sample Receiving Date: Dec 09, 2025

Testing Period: Dec 09, 2025 ~ Dec 16, 2025

Test Requested: Select test(s) as requested by the client.

Test Method(s): Please refer to next page(s).

Test Result(s): Please refer to next page(s).

| Test Requirement | Conclusion |
|---|------------|
| EU RoHS Directive (EU) 2015/863 amending Annex II to Directive 2011/65/EU - Lead, Mercury, Cadmium, Hexavalent chromium, Polybrominated biphenyls (PBB), Polybrominated diphenyl ethers (PBDE), Bis(2-ethylhexyl) phthalate (DEHP), Butyl benzyl phthalate (BBP), Dibutyl phthalate (DBP) and Diisobutyl phthalate (DIBP) | Pass |

Signed for and on behalf of
SGS-CSTC Standards Technical Services Co., Ltd. Guangzhou Branch



Violet Shi
Approved Signatory

Scan to see the report.



Test Report

No.: CANEC25030712727

Date: Dec 17, 2025

Page 2 of 7

Test Result(s):

Test Part Description

| SN ID | Sample No. | SGS Sample ID | Description |
|-------|------------|-------------------------|-------------------|
| SN1 | A57 | CAN25-0307127-0001.C057 | Multi-color solid |

Remarks:

- (1) 1 mg/kg = 1 ppm = 0.0001%
- (2) MDL = Method Detection Limit
- (3) ND = Not Detected (< MDL)
- (4) "-" = Not Regulated

EU RoHS Directive (EU) 2015/863 amending Annex II to Directive 2011/65/EU - Lead, Mercury, Cadmium, Hexavalent chromium, Polybrominated biphenyls (PBB), Polybrominated diphenyl ethers (PBDE), Bis(2-ethylhexyl) phthalate (DEHP), Butyl benzyl phthalate (BBP), Dibutyl phthalate (DBP) and Diisobutyl phthalate (DIBP)

Test Method: With reference to IEC 62321-4:2013+AMD1:2017, IEC 62321-5:2013, IEC 62321-7-2:2017 and IEC 62321-12:2023, analysis was performed by ICP-OES/AAS, UV-Vis and GC-MS.

| Test Item(s) | Limit | Unit(s) | MDL | A57 |
|---|-------|---------|-----|--------|
| Lead (Pb) | 1000 | mg/kg | 2 | 193149 |
| Mercury (Hg) | 1000 | mg/kg | 2 | ND |
| Cadmium (Cd) | 100 | mg/kg | 2 | ND |
| Hexavalent Chromium (Cr(VI)) | 1000 | mg/kg | 8 | ND |
| Polybrominated biphenyls (PBB) | 1000 | mg/kg | - | ND |
| Monobrominated biphenyl (MonoBB) | - | mg/kg | 25 | ND |
| Dibrominated biphenyl (DiBB) | - | mg/kg | 25 | ND |
| Tribrominated biphenyl (TriBB) | - | mg/kg | 25 | ND |
| Tetrabrominated biphenyl (TetraBB) | - | mg/kg | 25 | ND |
| Pentabrominated biphenyl (PentaBB) | - | mg/kg | 25 | ND |
| Hexabrominated biphenyl (HexaBB) | - | mg/kg | 25 | ND |
| Heptabrominated biphenyl (HeptaBB) | - | mg/kg | 25 | ND |
| Octabrominated biphenyl (OctaBB) | - | mg/kg | 25 | ND |
| Nonabrominated biphenyl (NonaBB) | - | mg/kg | 25 | ND |
| Decabrominated biphenyl (DecaBB) | - | mg/kg | 25 | ND |
| Polybrominated diphenyl ethers (PBDE) | 1000 | mg/kg | - | ND |
| Monobrominated diphenyl ether (MonoBDE) | - | mg/kg | 25 | ND |
| Dibrominated diphenyl ether (DiBDE) | - | mg/kg | 25 | ND |
| Tribrominated diphenyl ether (TriBDE) | - | mg/kg | 25 | ND |
| Tetrabrominated diphenyl ether (TetraBDE) | - | mg/kg | 25 | ND |
| Pentabrominated diphenyl ether (PentaBDE) | - | mg/kg | 25 | ND |
| Hexabrominated diphenyl ether (HexaBDE) | - | mg/kg | 25 | ND |
| Heptabrominated diphenyl ether (HeptaBDE) | - | mg/kg | 25 | ND |

Test Report

No.: CANEC25030712727

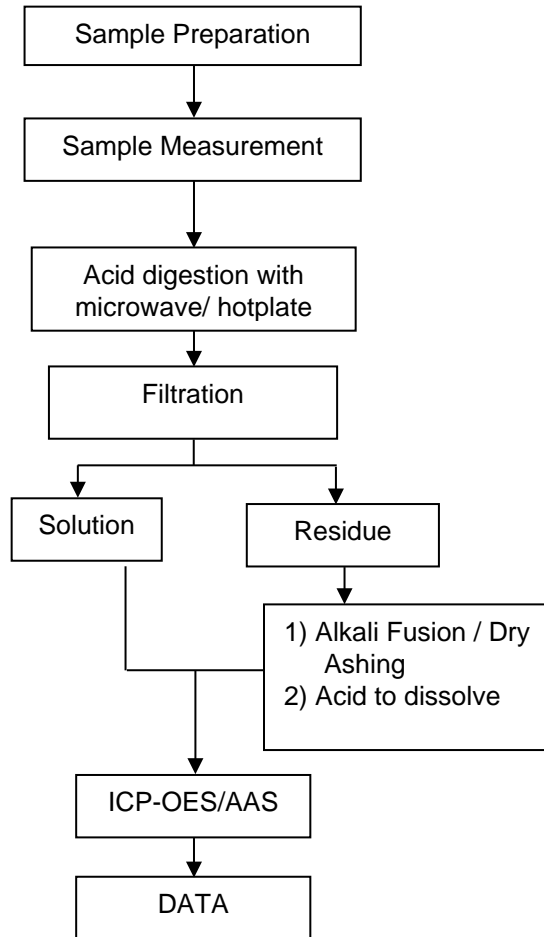
Date: Dec 17, 2025

Page 3 of 7

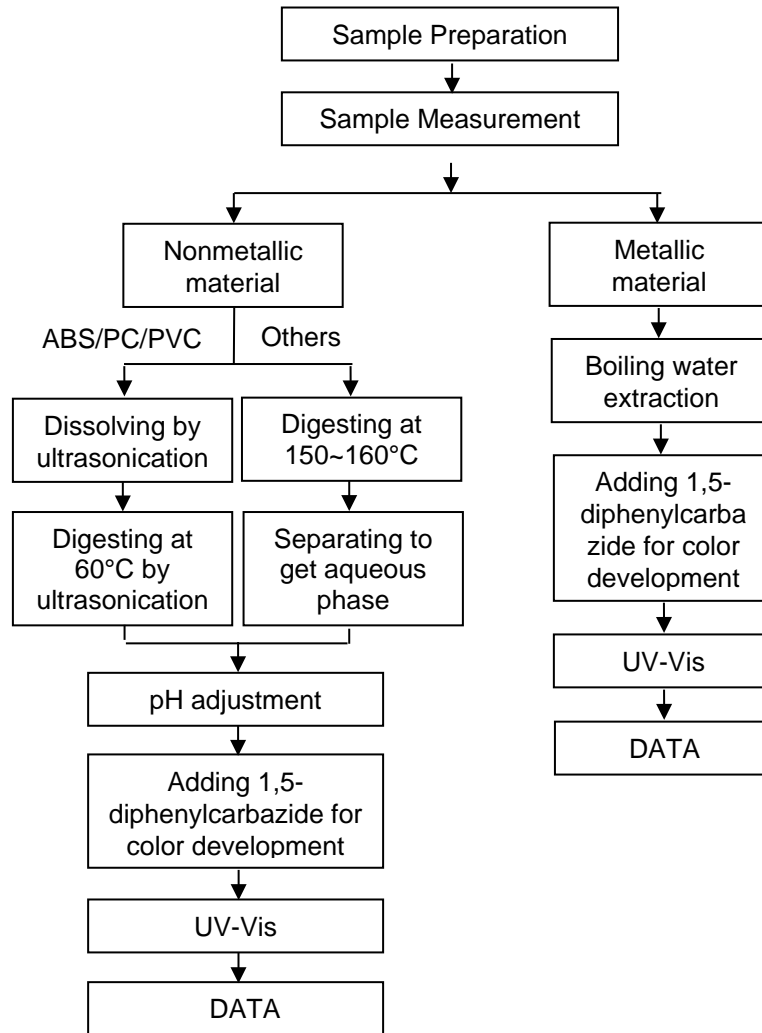
| Test Item(s) | Limit | Unit(s) | MDL | A57 |
|---|-------|---------|-----|-----|
| Octabrominated diphenyl ether (OctaBDE) | - | mg/kg | 25 | ND |
| Nonabrominated diphenyl ether (NonaBDE) | - | mg/kg | 25 | ND |
| Decabrominated diphenyl ether (DecaBDE) | - | mg/kg | 25 | ND |
| Bis(2-ethylhexyl) phthalate (DEHP) | 1000 | mg/kg | 50 | ND |
| Butyl benzyl phthalate (BBP) | 1000 | mg/kg | 50 | ND |
| Dibutyl Phthalate (DBP) | 1000 | mg/kg | 50 | ND |
| Diisobutyl Phthalate (DIBP) | 1000 | mg/kg | 50 | ND |

Elements Testing Flow Chart

These samples were dissolved totally by pre-conditioning method according to below flow chart.



Hexavalent Chromium (Cr(VI)) Testing Flow Chart



Test Report

ATTACHMENTS

No.: CANEC25030712727

Date: Dec 17, 2025

Page 6 of 7

PBB(s)/PBDE(s)/Phthalates Testing Flow Chart



Unless otherwise agreed in writing, this document is issued by the Company subject to its General Conditions of Service printed overleaf available as requested or accessible at <https://www.cpsc.com/en/Terms-and-Conditions>. Attention is drawn to the limits



